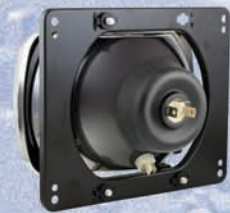




**WESEM**



*headlamps*

192 x 133

**NEWH**

*designed for tractors* **New Holland 56 bis**

**R2 or H4**

*triple-function*

### Construction and parameters

#### Application

To be mounted in factory designed locations or in the front bumper recesses.

Particularly recommended for tractors and slow-moving vehicles.

#### Construction

- metal reflector
- glass lens
- main bulb spring
- mounting plate with regulators
- headlight bulb gasket
- parking light bulb gasket
- parking light bulb holder
- bulb (option)

#### Other versions

Versions with bulb available on request.

#### Bulbs

Fit bulbs type:

R2 12V 45/40W or R2 24V 55/50W

H4 12V 60/55W or H4 24V 75/70W

T4W 12V or 24V (BA9s cap)

#### Useful parts while installing

Main bulb gasket

- catalogue No. A.05820.

Parking light bulb holder

- catalogue No. A.05921.

Main bulb mounting block

- catalogue No. A.07128.

#### Parameters

The driving light reference mark of headlights equipped with R2 bulb, which specifies the light's maximum luminous intensity is 7.5 (it is about 37.5 lx within distance of 25 m).

The driving light reference mark of headlights (equipped with H4 bulb), which specifies the light's maximum luminous intensity is 17.5 (it is about 85 lx within distance of 25 m).

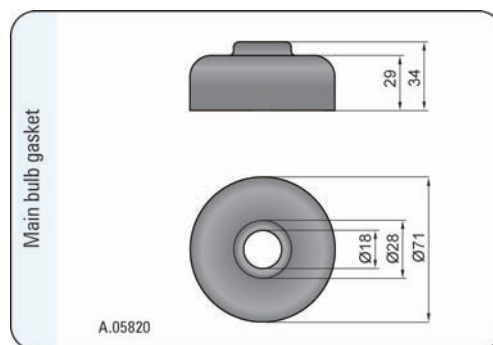
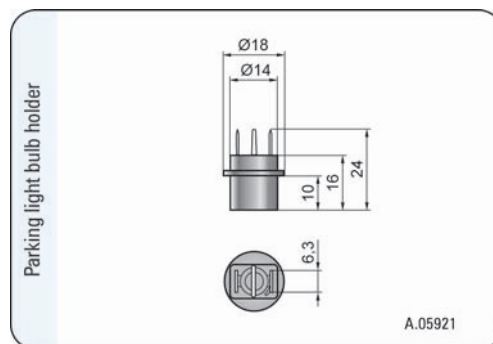
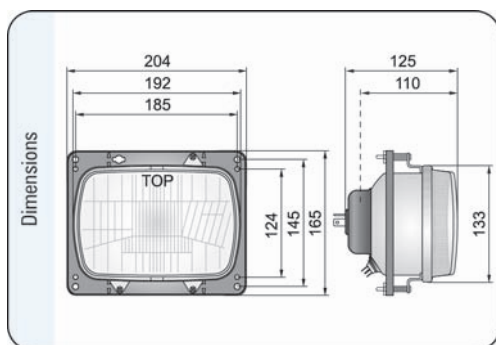
#### Dedicated application

A- New Holland: 55.56, 60.66S,

70.66S, 80.66S

Cat. number	Homologation code	Light function			Type	H4	R2	Traffic	right-hand	left-hand	Accessories	bulb H4 12V	bulb H4 24V	bulb R2 12V	bulb R2 24V	bulb T4W	aperture	frame	mounting plate	adjustments	bulb gasket	Application		Packaging / pc		
		passing light	driving light	parking light																		universal	dedicated	blister pack	carton box	
RE.27608	029	*	*	*		*			*								*		*	*	*	*	*	A		1
RE.27708	030	*	*	*					*								*		*	*	*	*	*			1

Homologation code means identifier of certification number.



- headlamps
- additional lamps
- work lamps
- special lamps
- signalling lamps
- bicycle lamps
- accessories
- transportation